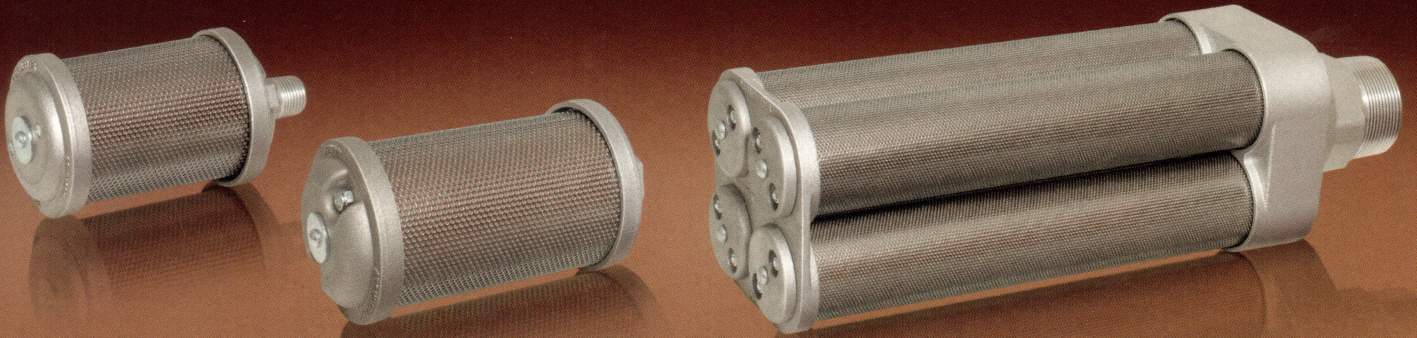


Air Dryer Muffler



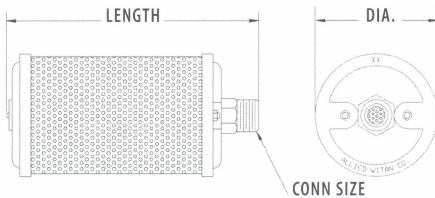
Dual-stage filter element traps particulates for longer element life and less noise

The Atomuffler® Air Dryer Muffler is designed specifically to manage the demanding service problems associated with desiccant regenerative-type air dryers. These air dryers often expel air laden with moisture which can be heavily contaminated with desiccant dust.

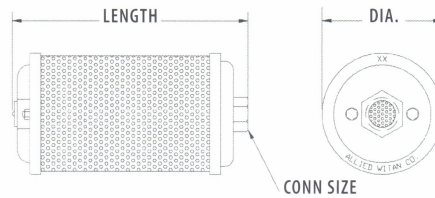
The primary stage of the Air Dryer Muffler's dual-stage filter element traps particulates, allowing cleaner air to permeate freely through the secondary stage, which manages the reduction of noise. This design also features a relief valve that is triggered to open if the air outflow becomes obstructed by a build-up of particulate, which will divert the outflow directly to atmosphere.

It is highly recommended that the air dryer system be initially purged of free desiccant fragments before installing a new Air Dryer Muffler or whenever an air dryer has been recharged with new desiccant material.

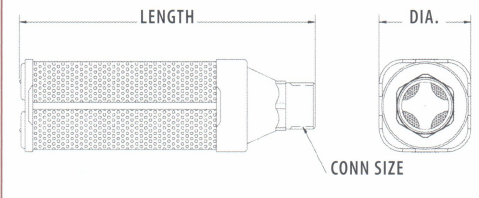
Single Chamber-Male



Single Chamber-Female



Multi-Chamber-Male



Conn Size	Connection Thread Types						Dimensions					
	Male NPT		Female NPS		Male BSPT		Diameter	Length		Item weight	Flow SCFM	Replacement Element
	Model Type	Item Number	Model Type	Item Number	Model Type	Item Number		Male	Female			
1/8	X01	0375001	R01	0475001	X01	0325001	1.84	3.12	2.81	.25	42	0941001
1/4	X02	0375002	R02	0475002	X02	0325002	1.84	4.37	4.00	.32	80	0941002
3/8	X00	0375000	R00	0475000	X00	0325000	2.59	5.12	4.56	.68	182	0941000
1/2	X05	0375005	R05	0475005	X05	0325005	3.15	6.00	5.50	1.12	243	0941005
3/4	X07	0375007	R07	0475007	X07	0325007	3.40	7.18	6.68	1.58	517	0941007
1	X10	0375010	R10	0475010	X10	0325010	3.90	8.75	7.92	2.29	760	0941010
1-1/4	X12	0375012	R12	0475012	X12	0325012	3.90	8.75	8.00	3.54	1292	0941012
1-1/2	X15	0375015	R15	0475015	X15	0325015	5.25	13.56	12.50	4.96	1664	0941015
2	X20	0375020	R20	0475020	X20	0325020	5.25	18.87	17.75	6.61	3040	0941020
3	X30	0375030	-	-	X30	0325030	7.00	22.93	-	15.50	6840	0941030
4	X40	0375040	-	-	X40	0325040	8.00	23.56	-	19.29	13300	0941040
6	X60	0375060	-	-	X60	0325060	11.00	30.93	-	38.47	34200	0941060

For High Pressure Air Dryer Mufflers go to High Pressure Mufflers, page 9