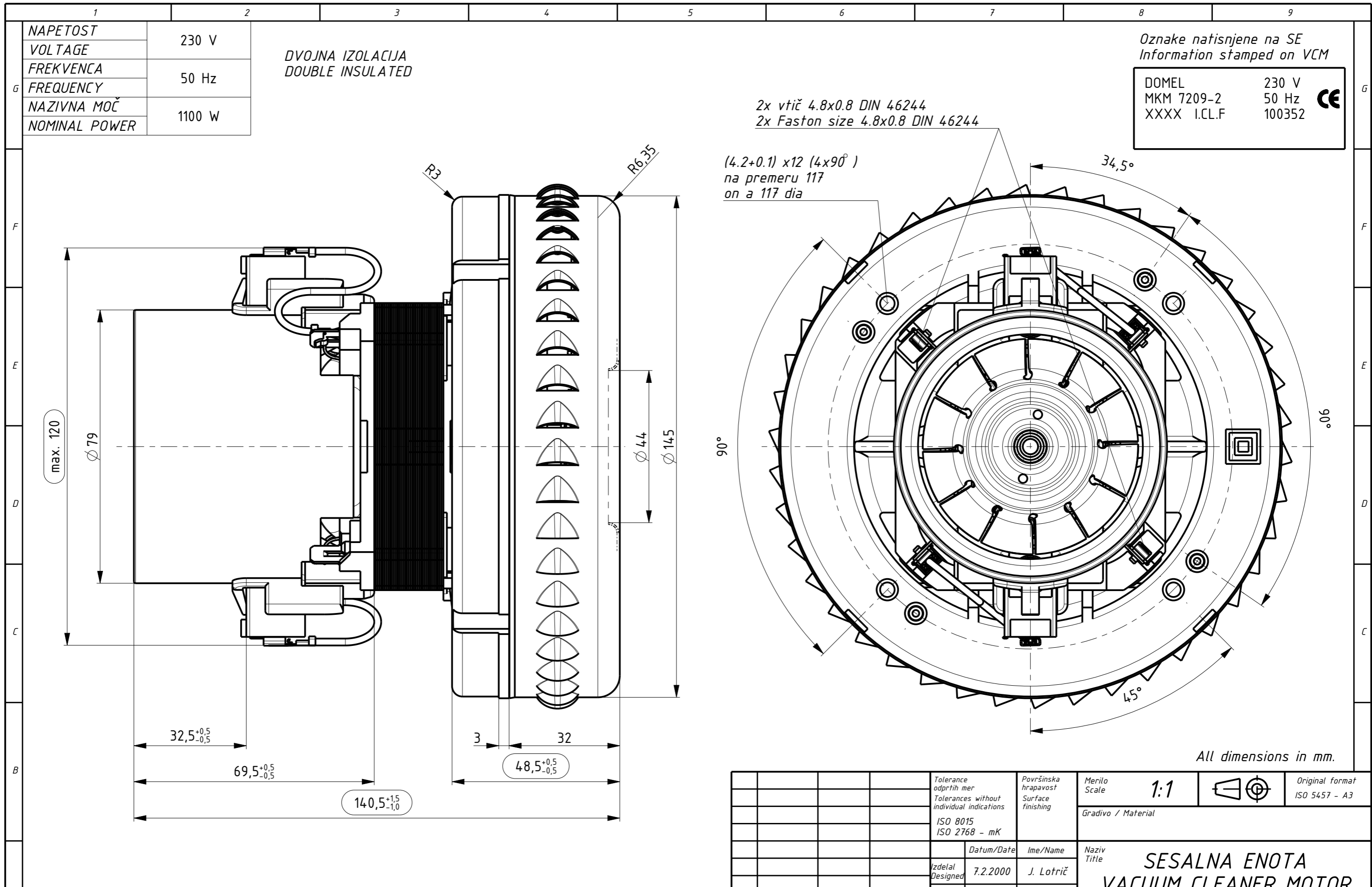


Izdelano s CAD/ProEngineer - ročno spreminjanje ni dovoljeno! Vsak prenos tretjim osebam ali uporaba v nedogovorjene namene ni dovoljena po zakonu o avtorskih pravicah. Made with CAD/ProEngineer - changing is not allowed! Any unauthorized copying of this drawing or unauthorized distribution of the information contained herein is prohibited.



All dimensions in mm.

OSNOVNE ZNAČILNOSTI		TYPICAL CHARACTERISTICS	
IZVEDBA	ENOSTOPENJSKA	FAN SYSTEM	SINGLE STAGE
VLEŽAJENJE	DVA KROGLIČNA LEŽAJA	BEARINGS	DUAL BALL
VRSTA PRETOKA	MIMO MOTORJA	DISCHARGE	BY PASS
SMER VRTENJA	LEVA	DIRECTION OF ROTATION	CCW

Tolerance odprtih mer Tolerances without individual indications ISO 8015 ISO 2768 - mK		Površinska hrapavost Surface finishing	Merilo Scale 1:1	Original format ISO 5457 - A3
Datum/Date			Gradivo / Material	
Izdelal Designed 7.2.2000 J. Lotrič		Naziv Title SESALNA ENOTA VACUUM CLEANER MOTOR MKM 7209-2		
Pregl. Verified 24.11.2005 J. Kavčič		Koda Code 492.3.209-2		
D1	7564	24.11.05	J. Luznar	List Sheet 3+
C1	6619	29.05.03	J. Luznar	Stran Page 1
B1	5578	04.09.00	J. Luznar	
A0	5437	16.03.00	S. Zgaga	
Ozn. Mark	Št. obvestila Nr. of notice	Datum Date	Ime Name	
DOMEL			4923209002_SESALNA_ENOTA	
Otoki 21, 4228 Železniki, Slovenija				