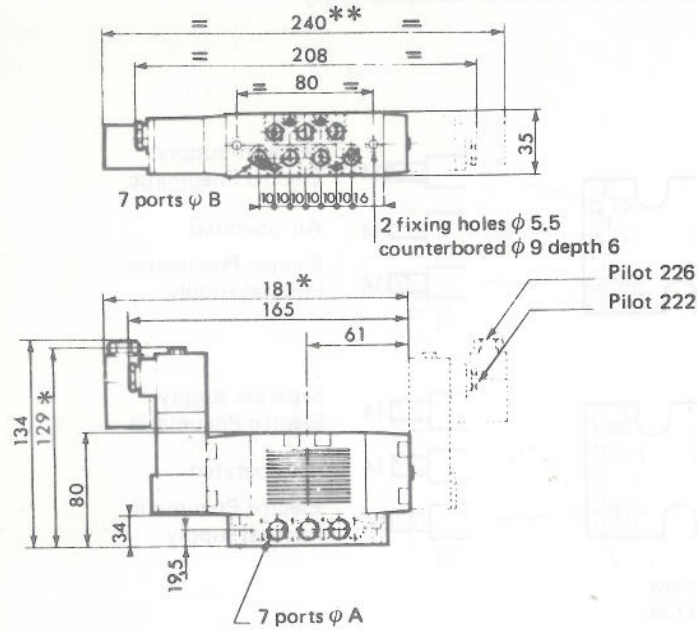


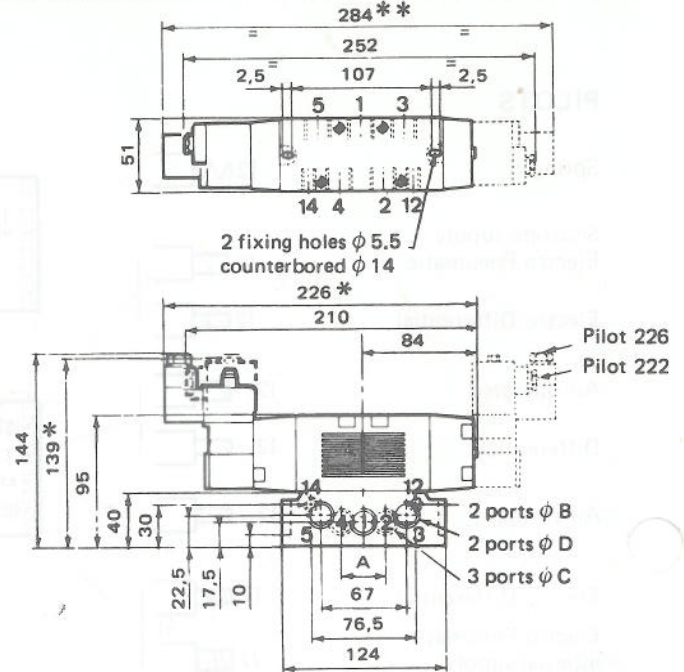
DIMENSIONS AND WEIGHTS

φ orifice 6 mm
VALVE ON SINGLE SUB BASE
MIXED OR SIDE PORTS



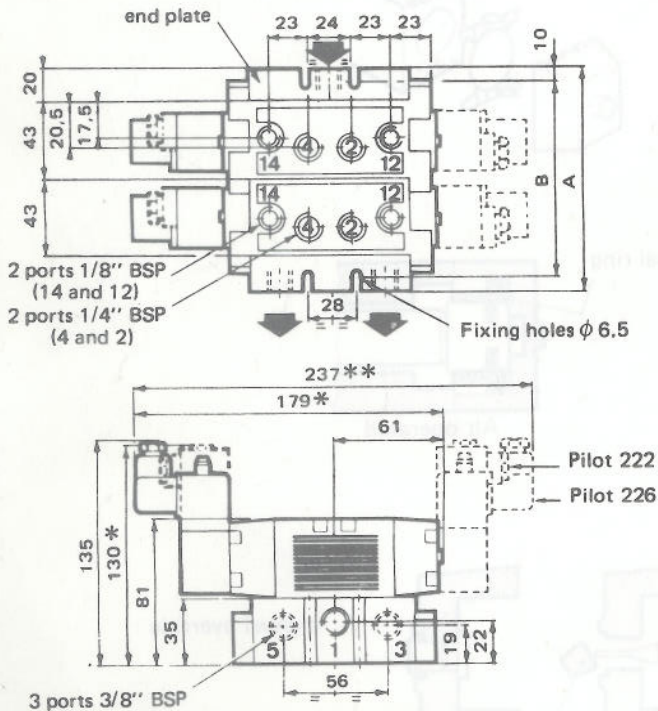
Sub bases	φ Ports BSP	
	φ A	φ B
Exhaust port	1/4"	—
Mixed port	1/4"	1/4"

φ orifice 12 mm
VALVE ON SINGLE
SIDE PORTS SUB BASE



Code of bases	φ B (12-14)	Ports φ C (1-2-4)	φ D (3-5)	Quota
				A
355 00 041	1/8" BSP	3/8" BSP	1/2" BSP	32
355 00 042	1/8" BSP	1/2" BSP	1/2" BSP	36

VALVES ON MANIFOLD SUB BASES



∅	Weight in kg + sub base	
	+1 pilot	+2 pilots
6	1,250	1,550
12	2,050	2,350

Number of bases	Weight in kg			
	A	B	1 pilot	2 pilots
2	126	106	2,500	3,100
3	169	149	3,330	3,930
4	212	192	4,160	4,760
5	255	235	4,990	5,590
6	298	278	5,820	6,420
7	341	321	6,650	7,250
8	384	364	7,480	8,080

* +15 mm
** +2 X 15 mm } For plug removal

Joucomatic reserve the right to modify designs without notice.



541 00 364 complete
541 90 021 s/sa side
226 00 007 SOLENOIDE / SCREW
191 00 002 SOLENOIDE BUTON?